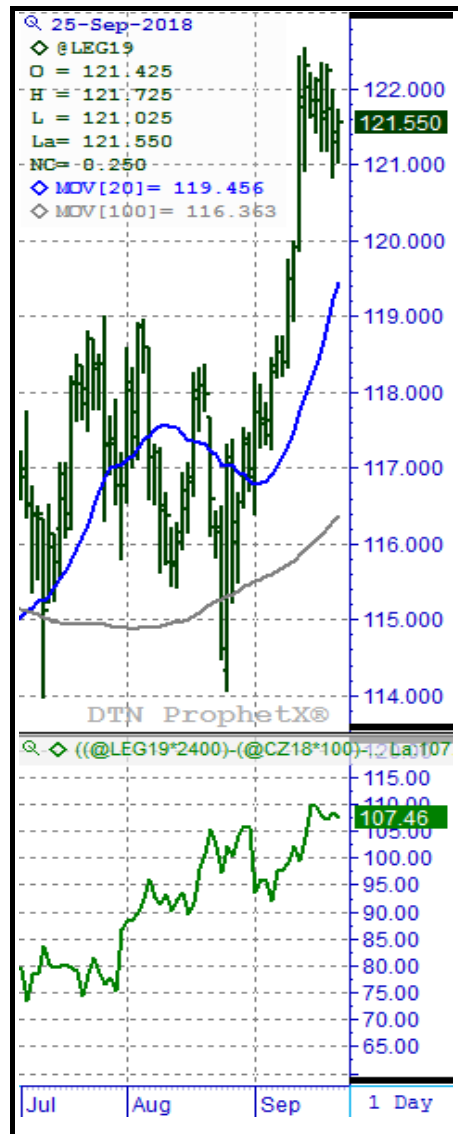


### Cattle Crush

Crush Sets	Settle	Net Change	Crush Settle
@GFU18	156.625	0.175	
@CZ18	363.750	3.250	
@LEG19	121.550	0.250	106.289
@GFV18	156.475	0.175	*
@CZ18	363.750	3.250	
@LEG19	121.550	0.250	107.461
@GFX18	156.425	0.500	
@CH19	375.750	3.250	
@LEJ19	122.825	0.225	117.539
@GFF19	153.950	0.275	
@CK19	383.500	3.250	
@LEM19	115.625	0.225	42.839
@GFH19	151.825	0.100	
@CN19	388.750	3.000	
@LEQ19	113.700	0.075	32.643
@GFJ19	152.150	0.250	
@CN19	388.750	3.000	
@LEQ19	113.700	0.075	30.104
@GFK19	151.775	0.225	
@CU19	392.500	2.500	
@LEV19	114.850	0.050	45.456
@GFQ19	153.475	0.250	
@CZ19	397.500	2.250	
@LEZ19	116.150	0.050	45.820



#### Cattle Crush Index:

192 hd. of 1250 lb. fed steers purchased at 780 lbs. and consuming 52 bu. of corn/hd.

The 140 line reflects \$30.00 per cwt. of weight gain of other fixed and variable costs.

#### Hog Crush:

1600 Hogs produced started as weaned pigs, consuming 15,000 bu. corn, 100 tons of meal, with weaned pig and other operational costs of \$65.00/hd.

Crush reflects returns/hd.

### Hog Crush

Crush Sets	Settle	Net Change	Crush Settle
@HEZ18	57.750	0.775	*
@CZ18	363.750	3.250	
@SMZ18	309.200	1.700	(4.808)
@HEG19	65.900	0.450	
@CZ18	363.750	3.250	
@SMF19	310.300	1.600	10.932
@HEJ19	70.525	0.300	
@CH19	375.750	3.250	
@SMH19	310.100	1.600	18.823
@HEK19	75.675	0.350	
@CK19	383.500	3.250	
@SMK19	309.300	1.400	28.155
@HEM19	80.825	0.350	
@CK19	383.500	3.250	
@SMK19	309.300	1.400	38.142
@HEN19	80.950	0.275	
@CN19	388.750	3.000	
@SMN19	311.200	1.400	37.792
@HEQ19	79.600	0.250	
@CN19	388.750	3.000	
@SMQ19	312.300	1.400	35.108
@HEV19	65.750	0.250	
@CU19	392.500	2.500	
@SMV19	312.300	1.300	7.906



All information contained in this email is intended only for the person or business receiving the email. Copyright 2018 all rights reserved. There is a risk of loss trading futures and futures options. Past performance is not a guarantee of future results.

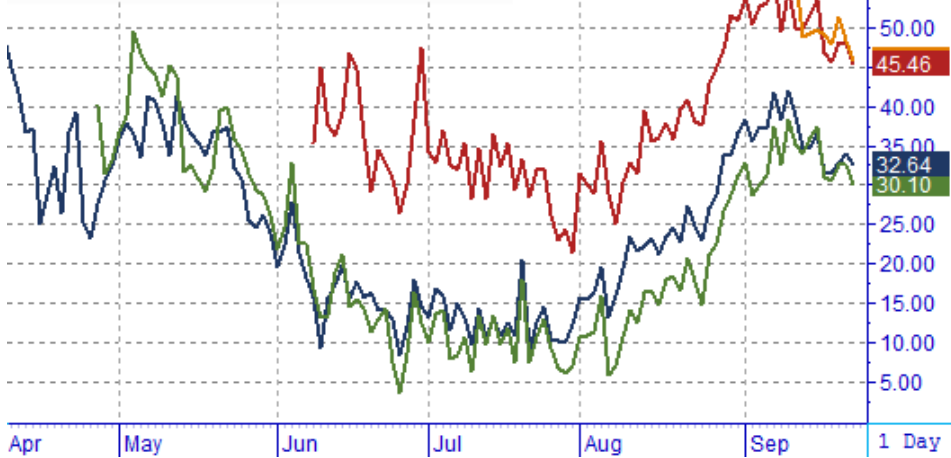
25-Sep-2018

- ◇ ((@LEG19\*2400)-(@CZ18\*100)-... La:106.29 NC:0.07
- ◇ ((@LEG19\*2400)-(@CZ18\*100)-... La:107.46 NC:0.07
- ◇ ((@LEJ19\*2400)-(@CH19\*100)-... La:117.54 NC:-2.79
- ◇ ((@LEM19\*2400)-(@CK19\*100)-... La:42.84 NC:-1.03



25-Sep-2018

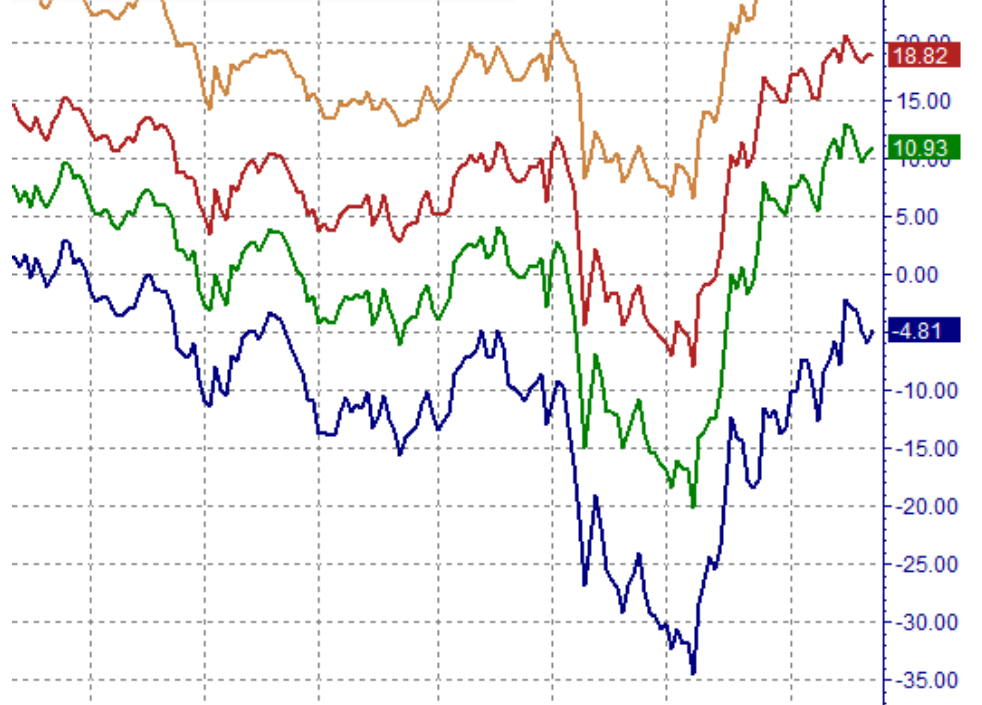
- ◇ ((@LEQ19\*2400)-(@CN19\*100)-... La:32.64 NC:-1.41
- ◇ ((@LEQ19\*2400)-(@CN19\*100)-... La:30.10 NC:-2.58
- ◇ ((@LEV19\*2400)-(@CU19\*100)-... La:45.46 NC:-2.43
- ◇ ((@LEZ19\*2400)-(@CZ19\*100)-... La:45.82 NC:-2.50



Apr May Jun Jul Aug Sep 1 Day

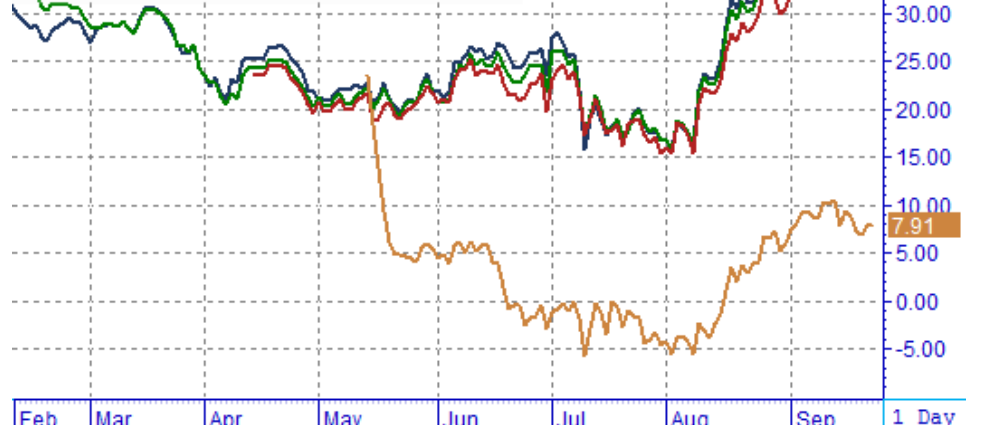
25-Sep-2018

- ◇ ((@HEZ18\*3200)-(@CZ18\*150)-... La:-4.81 NC:1.10
- ◇ ((@HEG19\*3200)-(@CZ18\*150)-... La:10.93 NC:0.48
- ◇ ((@HEJ19\*3200)-(@CH19\*150)-... La:18.82 NC:0.03
- ◇ ((@HEK19\*3200)-(@CK19\*150)-... La:28.15 NC:0.12



25-Sep-2018

- ◇ ((@HEM19\*3200)-(@CK19\*150)-... La:38.14 NC:0.12
- ◇ ((@HEN19\*3200)-(@CN19\*150)-... La:37.79 NC:-0.03
- ◇ ((@HEQ19\*3200)-(@CN19\*150)-... La:35.11 NC:-0.08
- ◇ ((@HEV19\*3200)-(@CU19\*150)-... La:7.91 NC:-0.03



Feb Mar Apr May Jun Jul Aug Sep 1 Day